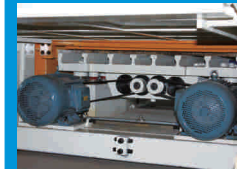
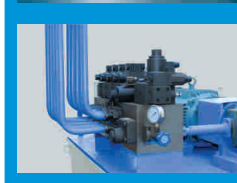
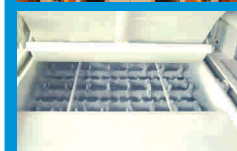
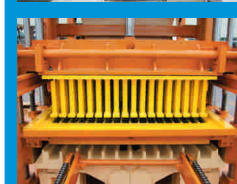


5 Big Advantages

- Germany Siemens PLC control system, Siemens touch screen.
- Germany Frequency Conversional Control Technology.
- Double High-dynamic Proportional/Directional Valves to automatically adjust the oil flow and pressure.
- 360° Multi-Shaft Rotating and Compulsory Feeding.
- Heat Treatment on moulds and main parts of the machine.



ZN 400 3D Production Line

Technical Specifications

ZN 400

Height of Finished Products	50-200 mm	Vibration Force	50 KN
Cycle Time	20-30 S (as per mould)	Motor Frequency	50 - 60 Hz
Pallet Size	880 x 540 mm	Overall Dimension	4400 (L) x 5000 (W) x 2400mm (H)
Production Area	830 x 500 mm	Total Weight	4.5T

Product	Size	Production Mould	Production Cap per 8 Hr.	Concrete Req. Cu.M./Hr.
Hollow Block	400 x 200 x 200 mm	4	4600 - 5700	8.64
Solid Block	400 x 200 x 150 mm	6	6900 - 8600	8.64
Rectangular Paver	200 x 100 x 60 mm	14	16100 - 20100	4.03
Zig-zag Paver	225 x 112.5 x 80 mm	12	14200 - 17200	4.34
Fly Ash Brick	230 x 110 x 75 mm	18	20700 - 25900	8.50

- **Raw Materials:** Crushed Stone, Sand, Cement, Stone dust, Fly-ash.
- **Finished Products:** Concrete Hollow Blocks, Solid Blocks, Colour Paver blocks, Interlocking paver, Kerbstones, Grass blocks, Garden & Landscaping products etc.
- **Applications:** Widely used in Buildings, Industrial shed, Road paving, Port, Bridge approach, Gardens, Landscaping, etc.
- **Note:** The capacity data are theoretical and are dependent on machine settings, mix design, aggregates used and other environmental conditions. All the production parameters are subject to change without prior notice

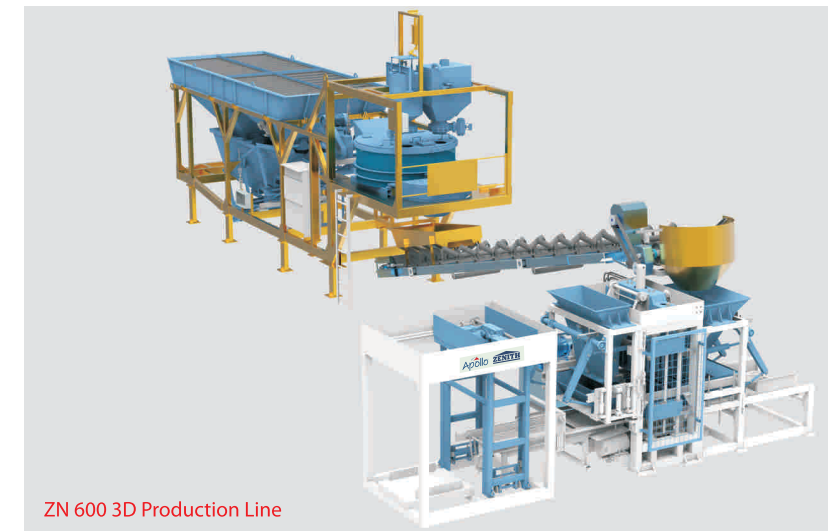
German Technology



Made in India

Automatic Concrete Block & Brick Making Machines

These German designed Zenith machines are most versatile, manufactured in India with SIEMENS frequency control technology for producing Hollow & Solid Blocks, Pavers, Kerbstones, Flyash Bricks etc. These are ideal & economical solutions for initial start-up.



ZN 600 3D Production Line

Technical Specifications

ZN 600

Height of Finished Products	50-200 mm	Vibration Force	60 KN
Cycle Time	15-20 S (as per mould)	Motor Frequency	50 - 60 Hz
Pallet Size	850 x 680 mm	Overall Dimension	5210 (L) x 3530 (W) x 2780mm (H)
Production Area	800 x 630 mm	Total Weight	7.5 T

Product	Size	Production Mould	Production Cap per 8 Hr.	Concrete Req. Cu.M./Hr.
Hollow Block	400 x 200 x 200 mm	6	6900 - 8600	17.28
Solid Block	400 x 200 x 150 mm	6	6900 - 8600	17.28
Rectangular Paver	200 x 100 x 60 mm	18	20700 - 25900	6.05
Zig-zag Paver	225 x 112.5 x 80 mm	15	17200 - 21600	9.11
Fly Ash Brick	230 x 110 x 75 mm	21	24100 - 30200	10.20

- **Raw Materials:** Crushed Stone, Sand, Cement, Stone dust, Fly-ash.
- **Finished Products:** Concrete Hollow Blocks, Solid Blocks, Colour Paver blocks, Interlocking paver, Kerbstones, Grass blocks, Garden & Landscaping products etc.
- **Applications:** Widely used in Buildings, Industrial shed, Road paving, Port, Bridge approach, Gardens, Landscaping, etc.
- **Note:** The capacity data are theoretical and are dependent on machine settings, mix design, aggregates used and other environmental conditions. All the production parameters are subject to change without prior notice

