



APOLLO HEM 12-27 SLIP FORM PAVER
Metric 4 Track for Paving 3.5 m to 9 m

No.	Specification	APOLLO HEM 12-27
1	Diesel Engine	186.425 kw (250 HP) Tier III
2	Hydraulic Oil Reservoir	916 Litre
3	Fuel Reservoir	440 Litre
4	Hydraulic system Heat Exchanger	4 with electric fan
5	Hydraulic Vibrator	24
6	Hydraulic Vibrator Circuits	24
7	Hydraulic Pump System	Three triple stage hydraulic pumps, one double stage hydraulic pump, one pressure relief manifold
8	Four Crawler Tracks	Length: 2.54m (8 ft 4 inches) Width: 30 cm (12 inch)
9	Paving Width	3.5m to 9m (12 ft - 27 ft)
10	Paving Pan	Available
11	Temper Bar System	Available
12	Hydraulically Adjustable Side Forms	6
13	Spreader Auger System	41 cm (16 inch) dia
14	Strike off Plate	Hydraulically Controlled
15	Grade Control System	Available
16	Steering System	Automatic & Manual Control
17	Power Wash System	Available
18	Intermittent shut down system	Available
19	Operator's Platform	Available
20	Dowel Bar Inserter	Optional



Exclusive Partners

Apollo Infratech Private Limited

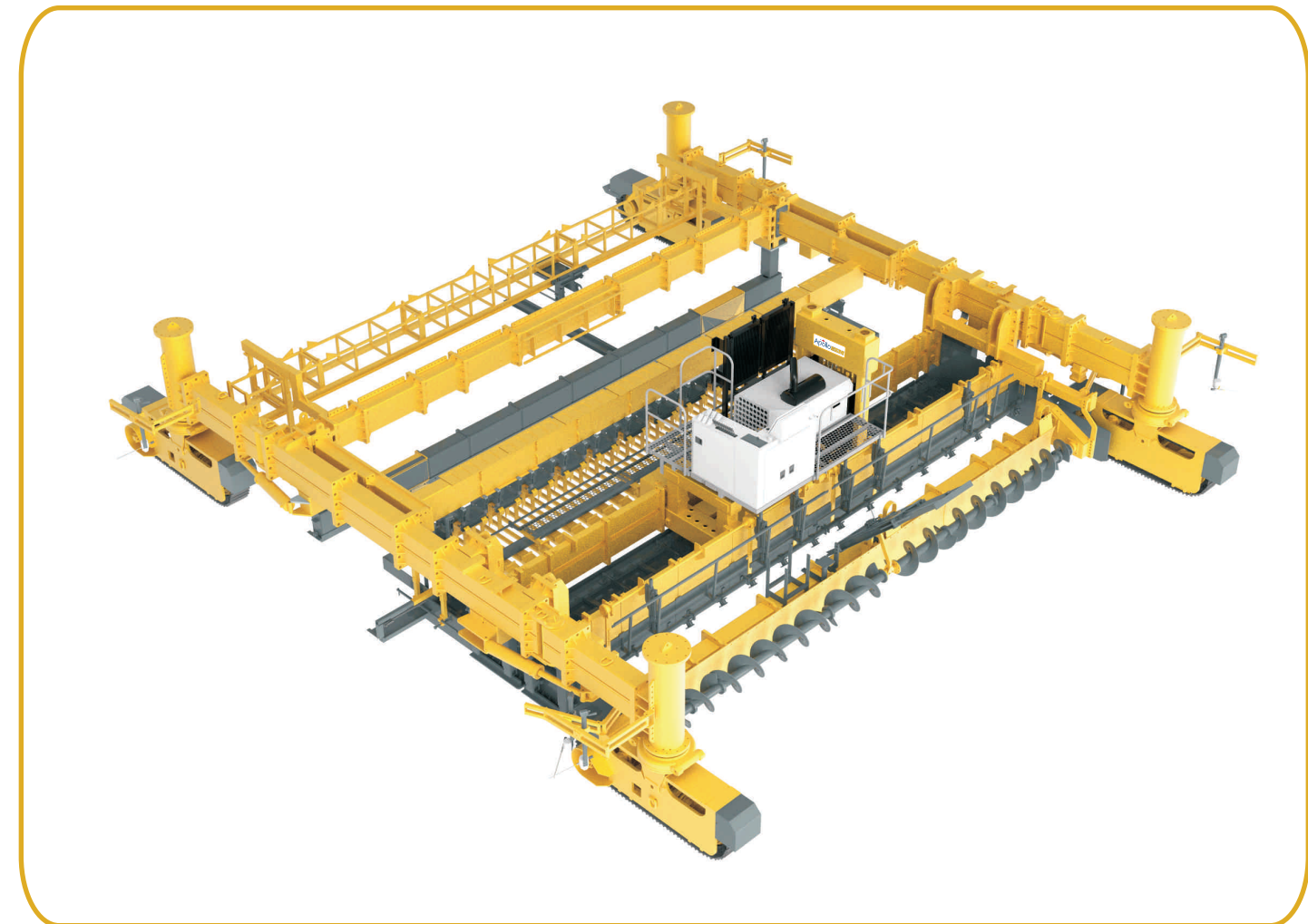
[an Apollo Infratech Group company]
Ahmedabad-Mehsana State Highway,
Village: Rajpur - 382 715, Taluka: Kadi, Dist: Mehsana,
Gujarat, INDIA. Tel: +91 99309 75577, 90991 44644
E-mail: info@apolloinfratech.com|
URL : www.apolloinfratech.com

ifma1996@gmail.com/12/17

www.apollonfratech.com



Individual Solutions
for all **your PAVING** needs



APOLLO HEM 12-27 SLIP FORM PAVER
4 Track for Paving 3.5 m to 9 m



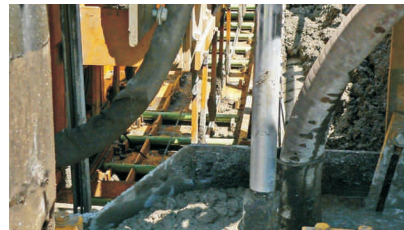


Paving the way to the future

Fully Loaded APOLLO HEM 12-27 SLIP FORM PAVER 4 Track for Paving 3.5 m to 9 m



Steel Reinforcement Options



Dowel Bar Inserter

Dowel Bar Inserter (DBI) - is used for automated insertion of dowel bars to maintain the surface level of adjacent concrete bars. Since concrete slipform paving began, there has been a need for mechanical Dowel Bar Inserters (DBI) to eliminate the costs and inconveniences associated with dowel supporting baskets which must be secured to the subgrade ahead of the paving operation. The DBI eliminates the need for extra manpower to handle and install the dowel baskets and allows concrete to be dumped on grade in front of the paver.



Side Bar Inserter

Side Bar Inserter (SBI) - is designed to insert straight tie bars into the side of a newly paved slab using hydraulic force to insert the bar. The insertion apparatus maintains its position with the side of the slab, as the paver continues to move forward during insertion of the bar. The SBI can be fitted to either the left side or right side of the paver or an inserter can be placed on both sides. Insertion of side tie bars reinforces the joint formed when adjacent concrete is poured.



Central Bar Inserter

Center Bar Inserter (CBI) - is used for placing center bars completely within the placed slab. A placed slab may be two or more lane width placed concurrently in one pass. These center bars are placed in a line transverse to the direction of machine travel. The Center Bar Inserter enable a joint to be subsequently cut in the middle of the slab parallel to the direction of machine travel.

- **Benefits**
- Simple to operate with less electronics
- Hydraulic vibrators which are adjustable individually hence no additional power supply required
- Equipped with Augers as finishing equipment which can be set at a speed to automatically move concrete from edge to edge with little or no attention from the operator
- Hydraulic sensors give more accuracy

Apollo Infratech has an exclusive partnership with USA based HEM PAVING. HEM designs and builds a full - line of Concrete Paving Equipments. For projects like Highways, Airfield Runways, Residential Paving or Canals. Apollo can serve the need of the customers ideally with HEM line of equipments.

Strike Off Plates

Standard on all APOLLO HEM Pavers, the strike-off plate is used to manage the amount of concrete delivered to the paver.

Augers

Standard on all APOLLO HEM Pavers, the augers spread the material across the width of the paver.

Optional Accessories

Burlap Drag & Belt Finisher

Water Fogging Bar

Curb Mold

Auto Float



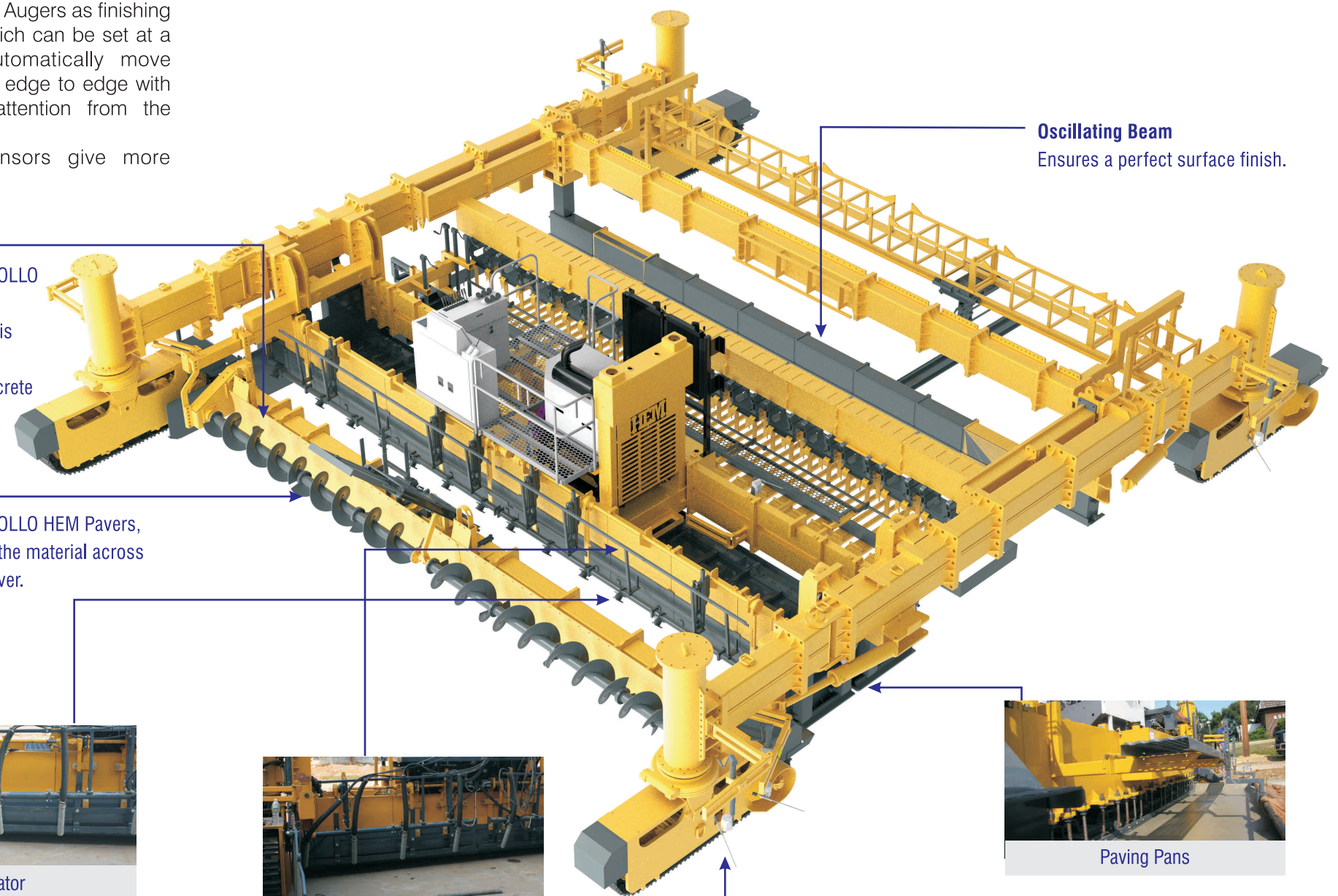
Vibrator

Hard surfaced straight type hydraulic needle gives correct vibration effect to provide better consolidation & consistency.



Tampers Bar

Places aggregates slightly under the surface of the concrete to provide a smooth surface finish.



Oscillating Beam

Ensures a perfect surface finish.



Paving Pans

Provides rectangular shape and the final slab dimensions, also serves to imbed larger aggregate particles below the surface, which result in a smooth finish.

Sensors

Reference the sensor string line for alignment and grade.

